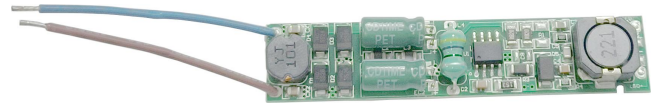


DC 电源系列

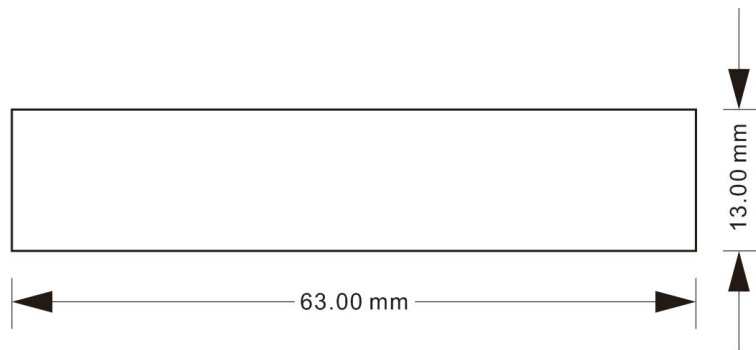
- 适用于 class I 及 class II 两类灯具 /Suitable for class I and class II luminaires
- 小尺寸大功率 /Simple size and high power
- 输出恒流驱动器 /Output constant current driver
- 符合 CE、CCC /Comply with CE、CCC
- 3 年质保 /3-years warranty

功能/Functions

- 输入不分正负极 /No input polarity
- DC to DC 恒流输出 /DC to DC constant current output
- 开路保护/Open circuit protection
- 短路保护 /Short-circuit protection
- 空载保护 /No-load protection



尺寸/Dimension



长*宽*高= 63 *13 * 6 mm

技术数据/Technical Date

For Driver		产品标准/Standard	
型号	OWSBxWxxxKL-A0	LVD	EN61347-2-13
额定输入电压	DC48V	LVD	EN61347-2-13
最大输入电流	0.417A	EMI	EN55015
电源频率	/	EMS	IEC6100-3-2/IEC6100-3-3
输出电压	24-38VDC	EMS	IEC6100-4-2/IEC6100-4-3/IEC6100-4-4
输出电流	125-545mA	EMS	IEC6100-4-5/ IEC6100-4-6/IEC6100-4-8
调光范围	NA		
效率	>55%		
功率因数	/		
寿命	20,000Hour		
使用温度	-20°C...+45°C		
储存温度	-20°C...+80°C		
尺寸	L63*W13*H6 mm		

安装接线/Installation and wiring

安装说明/Installation

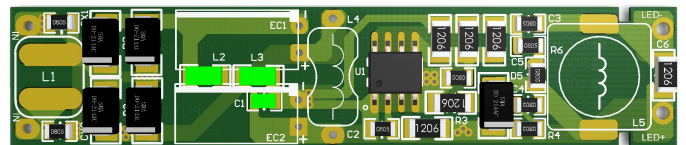
安装前需考虑散热/Heat dissipation must be considered before installation.

使驱动器尽可能远离周围环境中的电磁干扰，以确保射频控制行为/Keep the drivers as far as possible away from electromagnetic interference in the surrounding environment to ensure RF controlling behavior.

安装时一定要切断电源/Make sure to keep mains off while installation.

建议：所有的连接尽可能短，以确保良好的 EMC 性能。
Suggestion: make all connection as short as possible to ensure good EMC behavior.

接线图/Wiring Diagram



- 输入 (IN) 接 DC48V 直流电源 / Input (IN) connected to 48V DC power supply
- + 接 LED 负载正极， - 接 LED 负载负极 / + connected to the positive pole of LED load, - connected to the negative pole of LED load

所有的型号和规格/All models and specifications

型号 Model Number	输入电压 (V) Input Voltage	最大输入电 流 (A) Max input Cuurent	最大输出功 率 (W) Maxoutput Power	最大输出电 压 (V) Max Output Voltage	最大输出电 流 (mA) Max Output Current	额定输出电 压 (V) Rated Output Voltage	空载电压 (V) Max Output Voltage	效率 (%) Efficiency
OWSB5W130KL-A0	48DC	0.105A	4.8W	24~38V	125mA	36V	48V	90%
OWSB6W150KL-A0	48DC	0.125A	5.7W	24~38V	150mA	36V	48V	90%
OWSB7W190KL-A0	48DC	0.146A	6.8W	24~38V	180mA	36V	48V	90%
OWSB9W240KL-A0	48DC	0.187A	8.7W	24~38V	230mA	36V	48V	90%
OWSB12W310KL-A0	48DC	0.250A	11.8W	24~38V	310mA	36V	48V	90%
OWSB15W390KL-A0	48DC	0.313A	14.8W	24~38V	390mA	36V	48V	90%
OWSB18W480KL-A0	48DC	0.375A	17.8W	24~38V	470mA	36V	48V	90%
OWSB20W550KL-A0	48DC	0.417A	20.7W	24~38V	545mA	34V	48V	90%

应用/Application

适用于家居照明、商业照明、重点照明

